

## Viridans Just-a-Minute : Tutorial 3

### Task:

You are in the Langhi Ghiran park and have found a small, non-woody plant with tiny blue flowers in tight clusters at the ends of the stems. Use the Just a Minute – Victorian Plants package to find out what it is.

- Find the Langhi Ghiran park on a map of Victoria (use the gazetteer).
- Zoom in on a magnified map tile for close examination of the area
- Sketch an area which covers the park and a small buffer.
- Generate a list of all plant species found in the search area.
- Use the filters to select the characters, Medium Herb, Clustered Flower type, and Flowers Blue or Purple.
- View the results and examine each plant photograph and description to determine which is the best fit.

### The products of this task should be:

- A printed page showing a photograph-description-map combination for ***Brunonia australis*** (Blue Pincushion).

Just a Minute (Standard)  
Just a Minute (1:1,000,000 to 1:100,000)  
Just a Minute (1:1,000,000 to 1:100,000 - Low Contrast)  
Help  
Close

Select this option

*Just-a-Minute*  
*Victorian Plants*  
2012

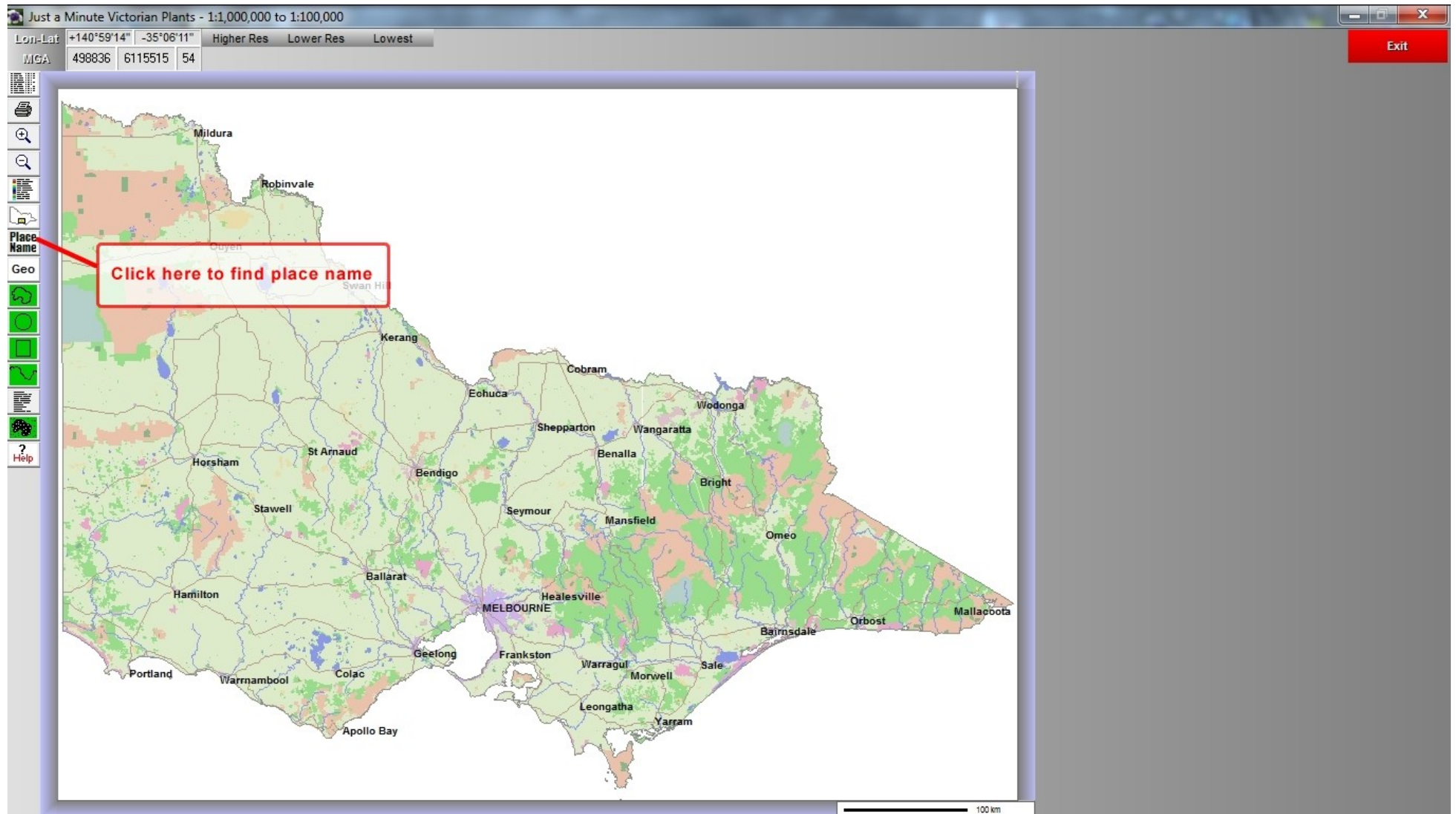


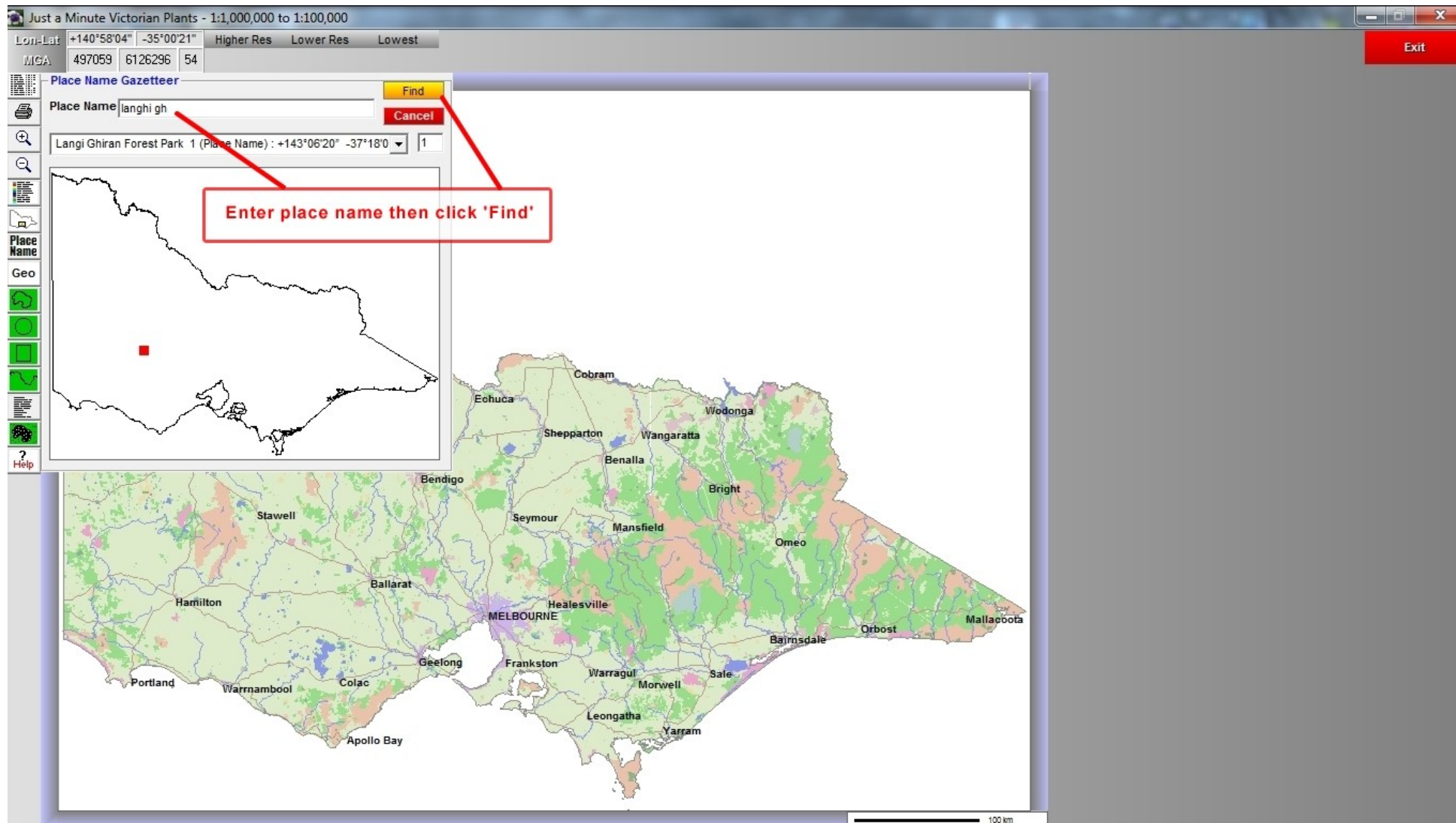
- Full Species List
- Area Species List
- Search an Area
- Help
- Close

Select this option

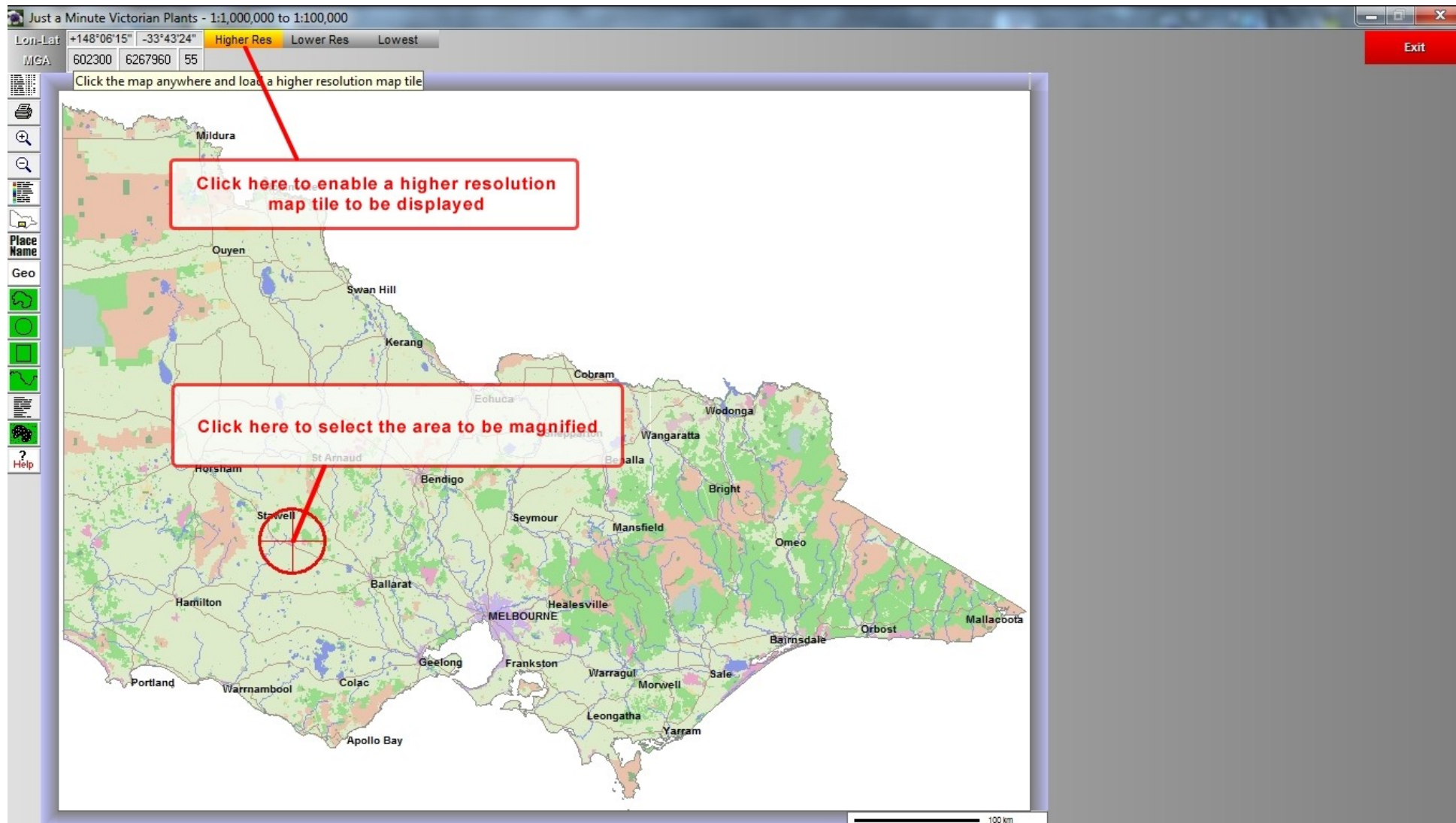
*Just-a-Minute*  
*Victorian Plants*  
2012

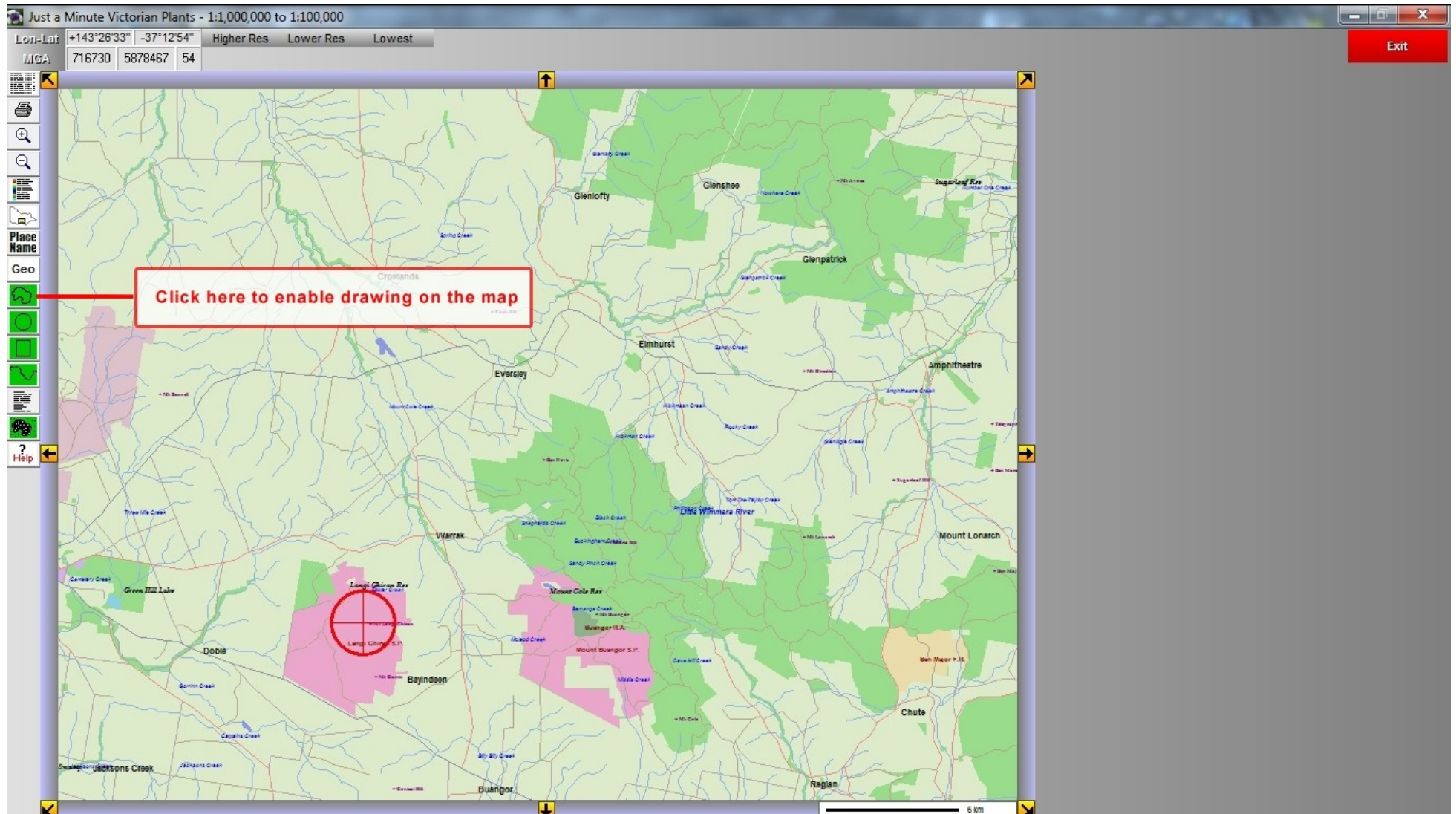




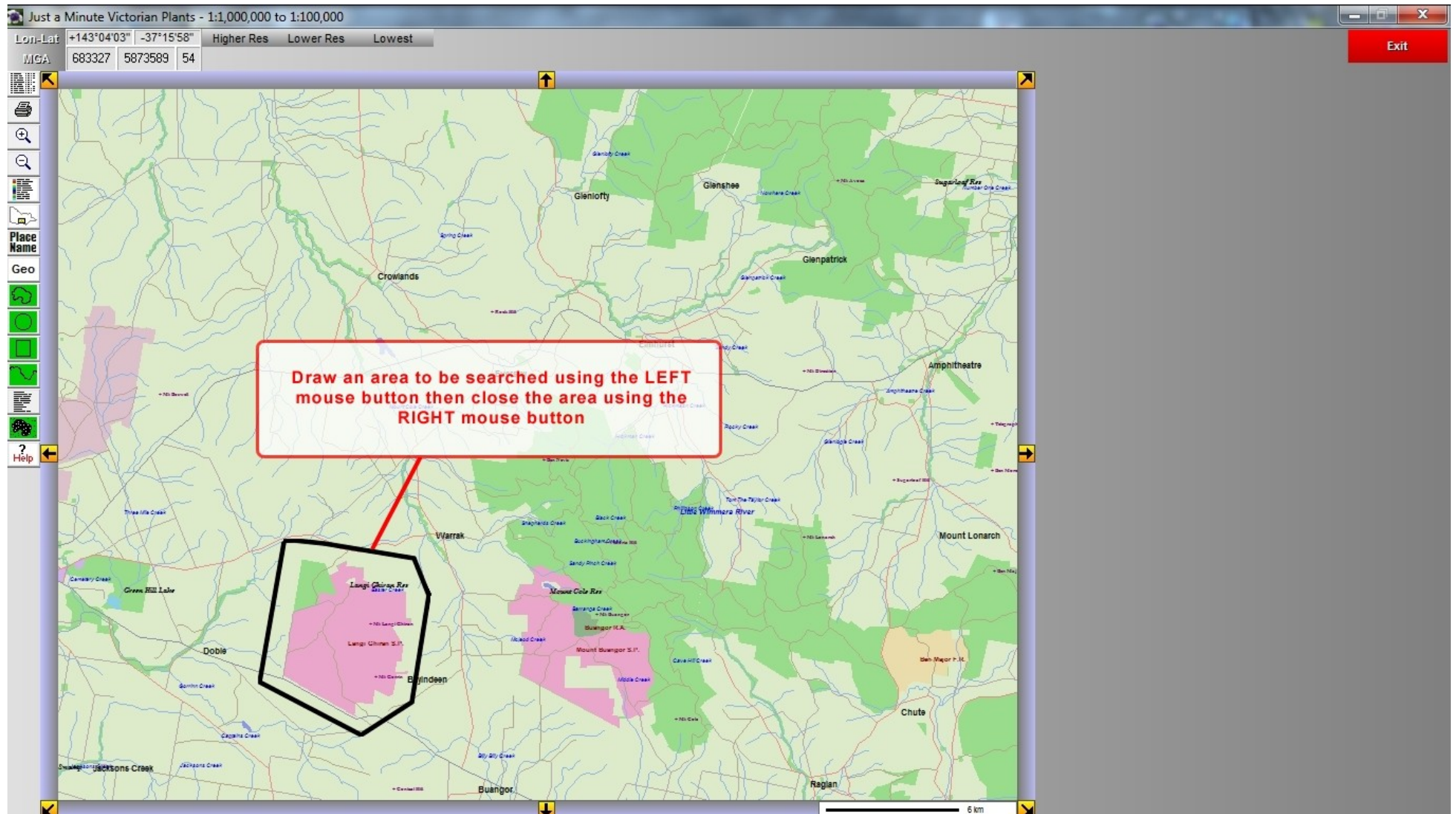




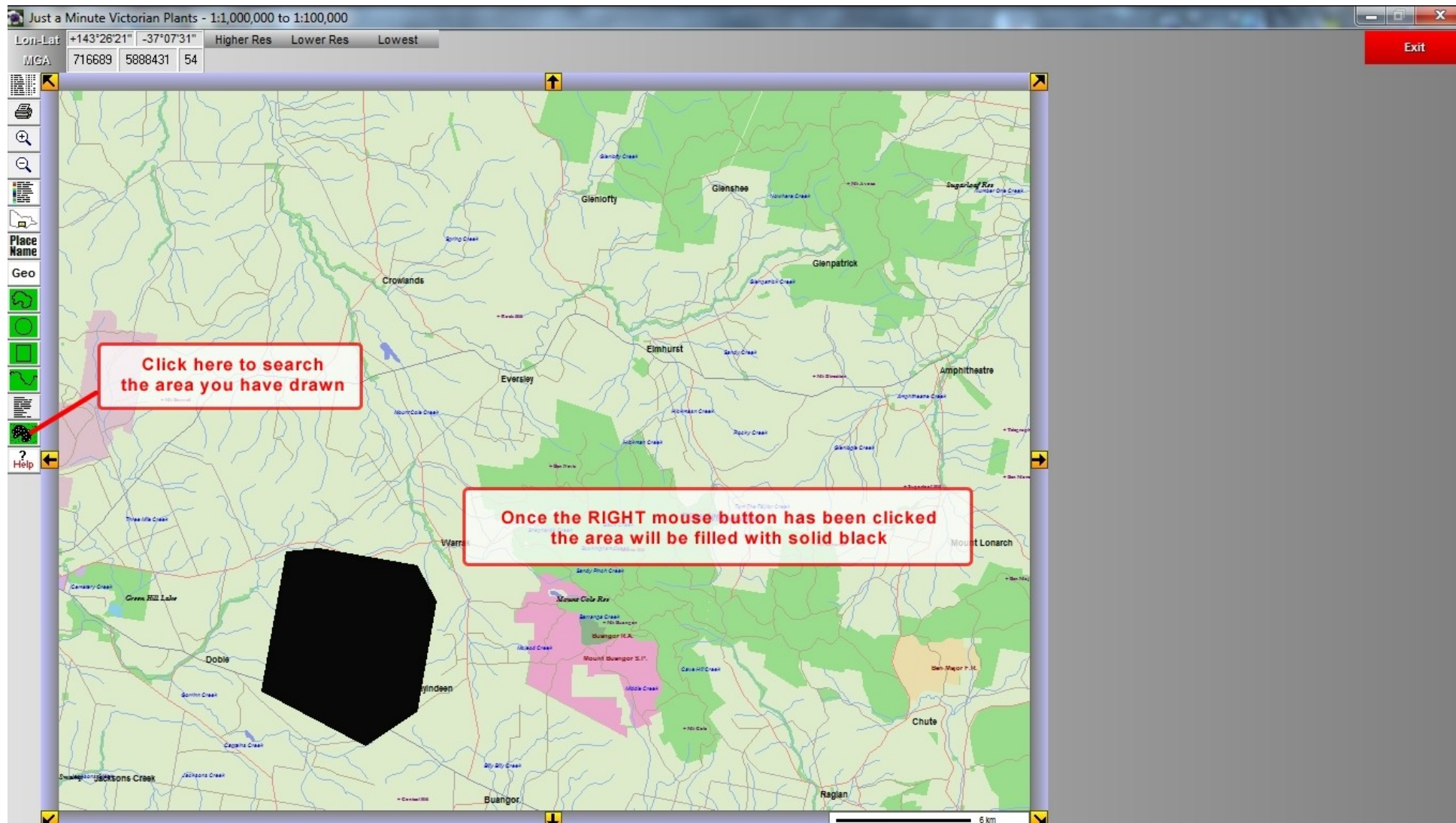


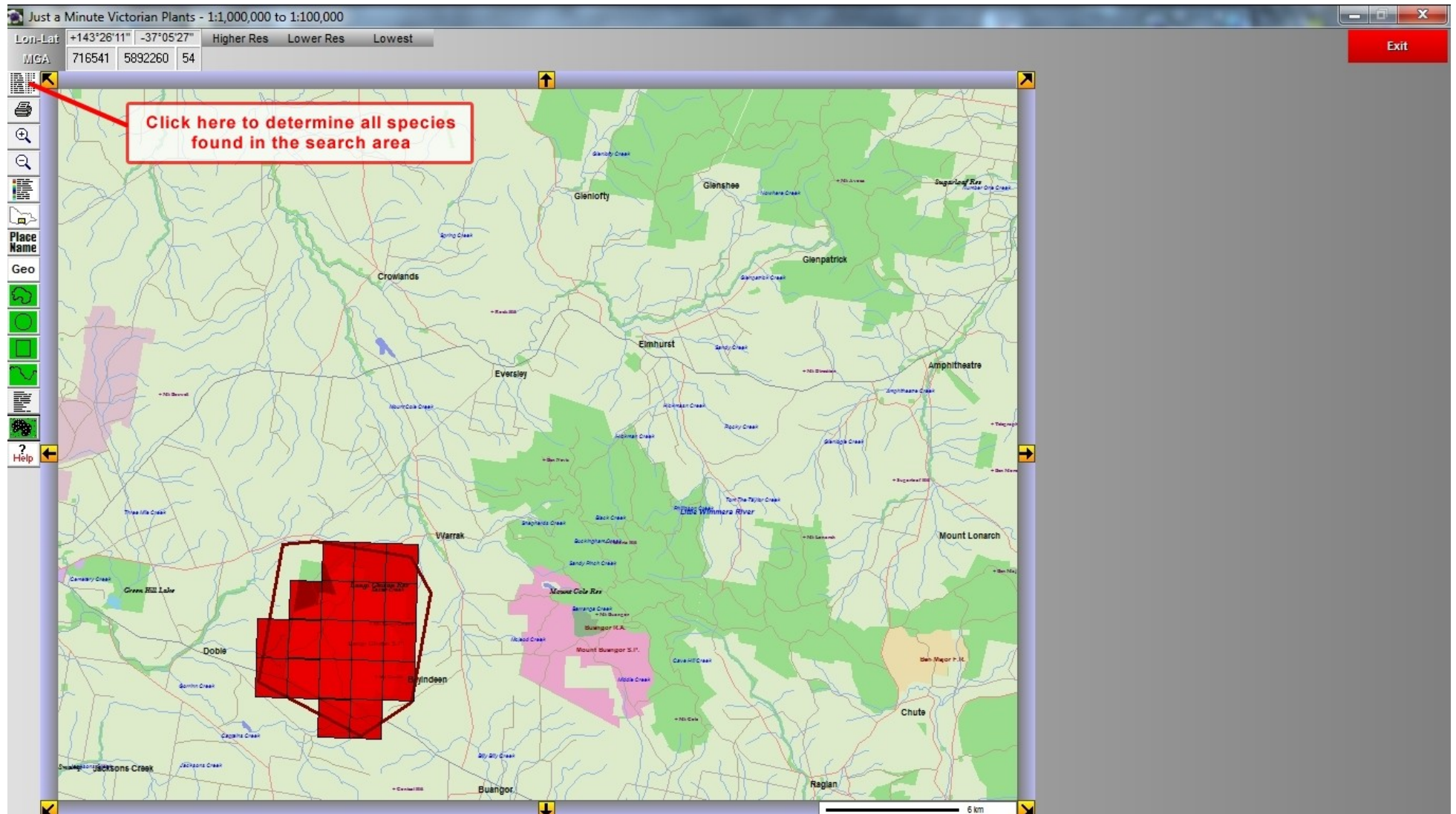














Just a Minute Victorian Plants - 1:1,000,000 to 1:100,000

Enter Scientific Name

Find Name

Sort on Common Name

Scientific Name Order : Area List : 453 species

Click on column buttons for interpretation of this list

F	A	S	O	Scientific Name	Common Name	Family Name	Last Date
		*		Acacia baileyana	Cootamundra Wattle	Mimosaceae	1980-1989
				Acacia dealbata	Silver Wattle	Mimosaceae	1990-1999
				Acacia dealbata subsp. dealbata	Silver Wattle	Mimosaceae	Undated
				Acacia genistifolia	Spreading Wattle	Mimosaceae	1970-1979
				Acacia gunnii	Ploughshare Wattle	Mimosaceae	2000-2010
				Acacia implexa	Lightwood	Mimosaceae	1980-1989
				Acacia mearnsii	Black Wattle	Mimosaceae	1990-1999
				Acacia melanoxylon	Blackwood	Mimosaceae	1990-1999
				Acacia oxycedrus	Silky Wattle	Mimosaceae	2000-2010
				Acacia paradoxa	Golden Wattle	Mimosaceae	2000-2010
				Acacia pycnantha	Golden Wattle	Mimosaceae	2000-2010
				Acacia verniciflua	Varnish Wattle	Mimosaceae	2000-2010
				Acacia verniciflua (typical variant)	Varnish Wattle	Mimosaceae	1980-1989
				Acacia verticillata	Prickly Moses	Mimosaceae	1990-1999
				Acaena echinata	Sheep's Burr	Rosaceae	2000-2010
				Acaena novae-zelandiae	Bidgee-widgee	Rosaceae	1980-1989
		*		Acetosella vulgaris	Sheep Sorrel	Polygonaceae	2000-2010
				Acrotriche serrulata	Honey-pots	Ericaceae	2000-2010
				Actinobole uliginosum	Flannel Cudweed	Asteraceae	1990-1999
		*		Acacia capillaris	Brown-top Rest	Rosaceae	2000-2010

This display is a list of all species found in the Langhi Ghiran state park

Click here to select filter options

Set Filters - Full

Apply Filters

Set Filters - Quick

Show Current Filters

Print or Export List in Alphabetic Order

Print or Export List in Systematic Order

Plot Distribution Map

Print Picture Text and Map

Display Larger Picture

General Appearance:

A large shrub or small tree to 5 m tall, with pale blue-green, feathery foliage, and very bright yellow, globular, flower clusters, in racemes, arising from leaf axils.

Leaves:

Bipinnate, alternate, broad oblong, 2-5 x 2-4 cm. Pinnae oblong, 2-3 x 1 cm, usually in 4 opposite pairs, the lowest deflexed and partially embracing the stem, the upper pairs with a gland at their bases. Pinnules, in 8-16 opposite pairs, oblong, 4-7 x 1 mm.

Flowers:

Clustered in globular, bright, golden-yellow heads, to 1 cm across, in long slender, often leafy racemes, to 10 cm long, at the ends of branchlets. Sepals and petals 3, inconspicuous. (Jun Jul Aug Sep)

Fruit:

An oblong, flattened pod to 9 x 1 cm, sometimes with one or two deep constrictions between seeds. Seeds 4-10, black and shiny, ovoid, 6-8 mm long, funicle pale brown, narrow and shorter than seed.

Notes:



Records outside of the Cootamundra region (perhaps more than 100 km from the town) in southern NSW are probably naturalisations.

Conservation:

[\*] Introduced to Victoria since European settlement.

Other States:

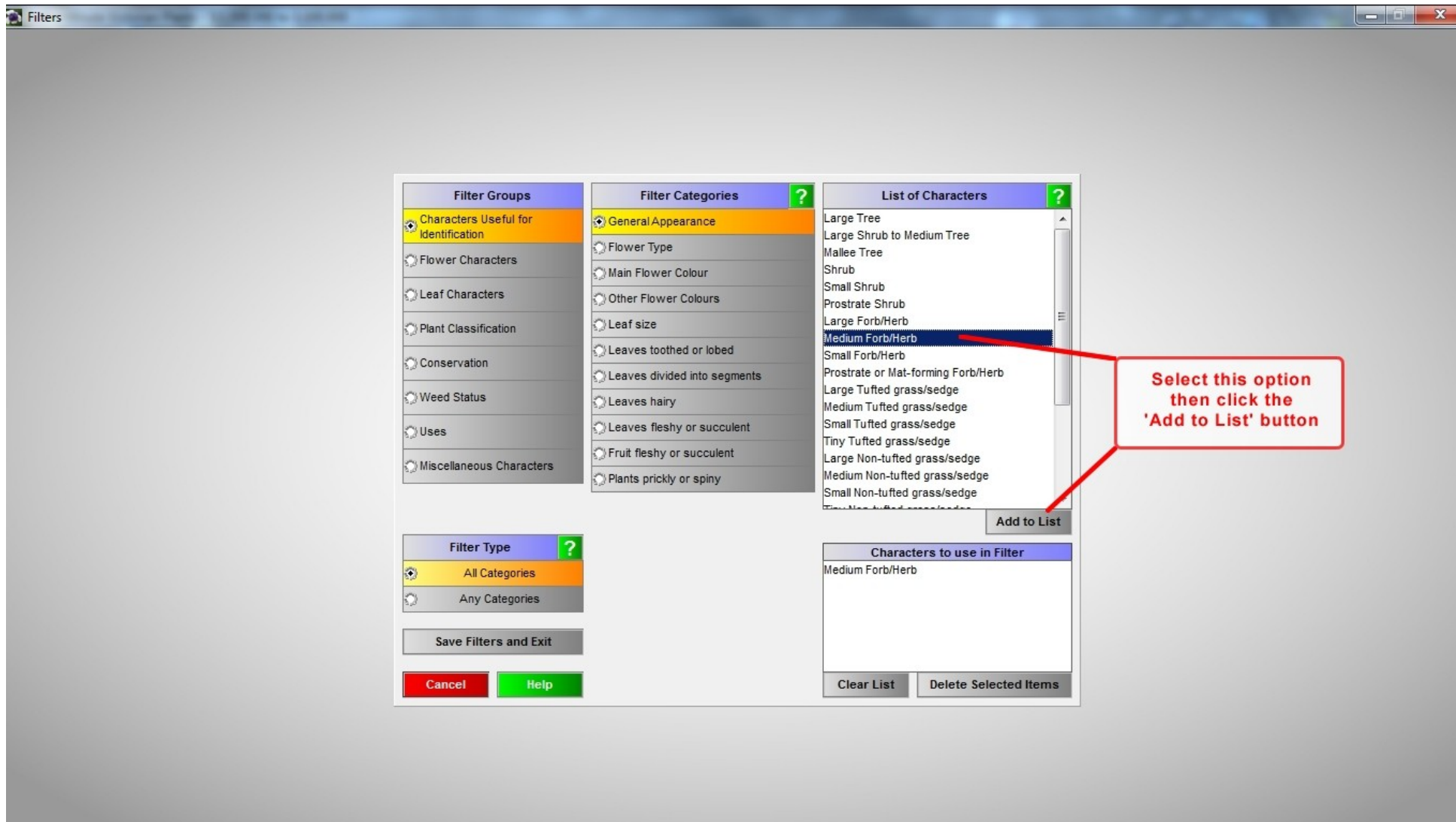
NSW/OLD SA/WA/TAS/ACT

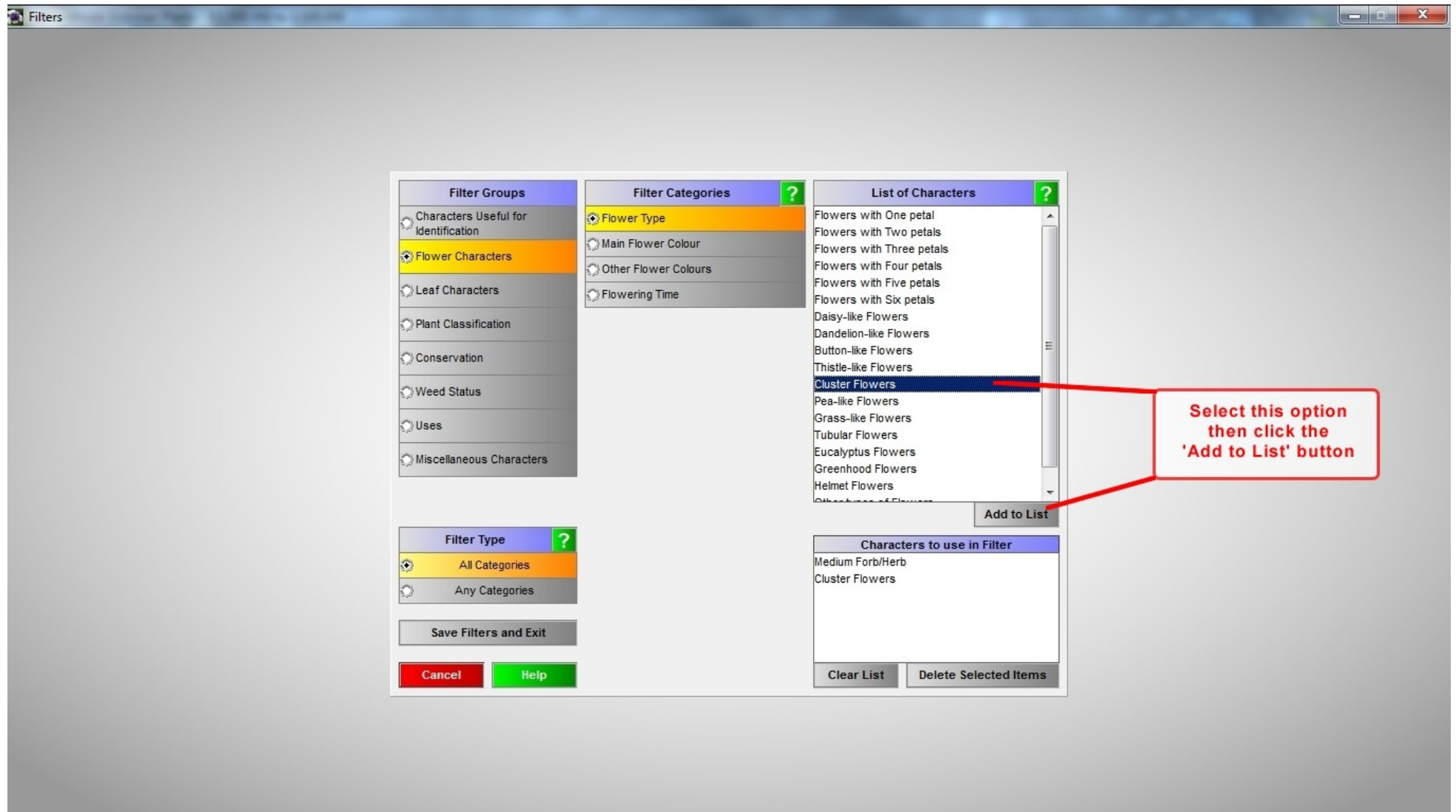
Photographer: Paul Gullan/Viridans Images

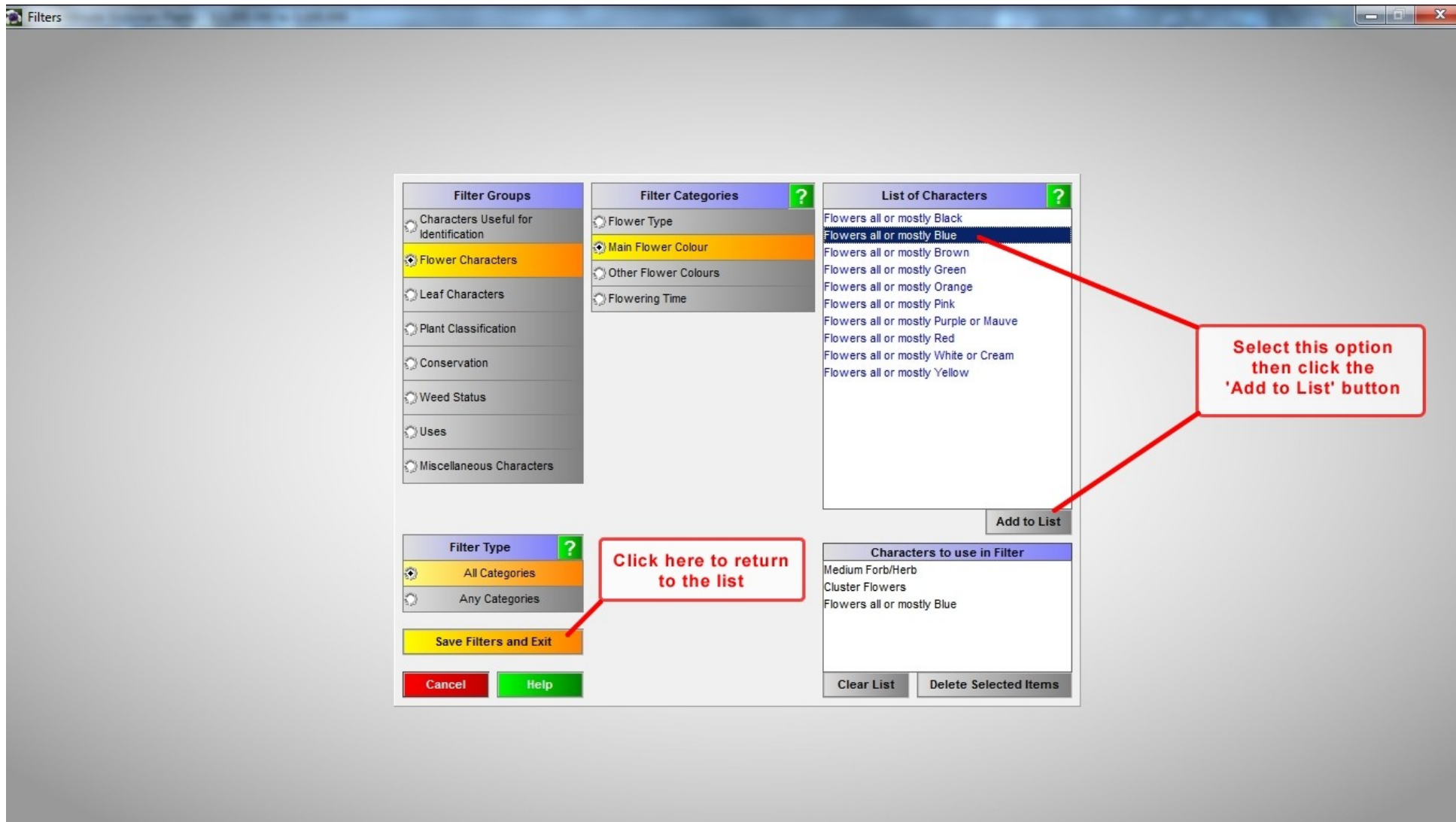
Image 1 of 1

Highlight any technical word then right-click mouse to find its meaning









Just a Minute Victorian Plants - 1:1,000,000 to 1:100,000

Enter Scientific Name

Find Name

Sort on Common Name

Scientific Name Order : Area List : 453 species

Click on column buttons for interpretation of this list

F	A	S	O	Scientific Name	Common Name	Family Name	Last Date
		*		Acacia baileyana	Cootamundra Wattle	Mimosaceae	1980-1989
				Acacia dealbata	Silver Wattle	Mimosaceae	1990-1999
				Acacia dealbata subsp. dealbata	Silver Wattle	Mimosaceae	Undated
				Acacia genistifolia	Spreading Wattle	Mimosaceae	1970-1979
				Acacia gunnii	Ploughshare Wattle	Mimosaceae	2000-2010
				Acacia implexa	Lightwood	Mimosaceae	1980-1989
				Acacia mearnsii	Black Wattle	Mimosaceae	1990-1999
				Acacia melanoxylon	Blackwood	Mimosaceae	1990-1999
				Acacia oxycedrus	Spike Wattle	Mimosaceae	2000-2010
				Acacia paradoxa	Hedge Wattle	Mimosaceae	2000-2010
				Acacia pycnantha	Golden Wattle	Mimosaceae	2000-2010
				Acacia verniciflua	Varnish Wattle	Mimosaceae	2000-2010
				Acacia verniciflua (typical variant)	Varnish Wattle	Mimosaceae	1980-1989
				Acacia verticillata	Prickly Moses	Mimosaceae	1990-1999
				Acaena echinata	Sheep's Burr	Rosaceae	2000-2010
				Acaena novae-zelandiae	Bidgee-widgee	Rosaceae	1980-1989
		*		Acetosella vulgaris	Sheep Sorrel	Polygonaceae	2000-2010
				Acrotriche serrulata	Honey-pots	Ericaceae	2000-2010
				Actinobole uliginosum	Flannel Cudweed	Asteraceae	1990-1999
		*		Acacia senilis	Drumstick Tree	Mimosaceae	2000-2010

Click here to invoke the selected filters

Exit

Help

Set Filters - Full

Apply Filters

Set Filters - Quick

Show Current Filters

Print or Export List in Alphabetic Order

Print or Export List in Systematic Order

Plot Distribution Map

Print Picture Text and Map

Display Larger Picture

Image 1 of 1

**General Appearance:** A large shrub or small tree to 5 m tall, with pale blue-green, feathery foliage, and very bright yellow, globular, flower clusters, in racemes, arising from leaf axils.

**Leaves:** Bipinnate, alternate, broad oblong, 2-5 x 2-4 cm. Pinnae oblong, 2-3 x 1 cm, usually in 4 opposite pairs, the lowest deflexed and partially embracing the stem, the upper pairs with a gland at their bases. Pinnules, in 8-16 opposite pairs, oblong, 4-7 x 1 mm.

**Flowers:** Clustered in globular, bright, golden-yellow heads, to 1 cm across, in long slender, often leafy racemes, to 10 cm long, at the ends of branchlets. Sepals and petals 3, inconspicuous. (Jun Jul Aug Sep)



**Fruit:** An oblong, flattened pod to 9 x 1 cm, sometimes with one or two deep constrictions between seeds. Seeds 4-10, black and shiny, ovoid, 6-8 mm long, funicle pale brown, narrow and shorter than seed.

**Notes:** Records outside of the Cootamundra region (perhaps more than 100 km from the town) in southern NSW are probably naturalisations.

**Conservation:** [\*] Introduced to Victoria since European settlement.

**Other States:** NSW/OLD SA/WA/TAS/ACT

Highlight any technical word then right-click mouse to find its meaning

Photographer: Paul Gullan/Viridans Images



Just a Minute Victorian Plants - 1:1,000,000 to 1:100,000

Enter Scientific Name

Find Name

Sort on Common Name

Scientific Name Order : Area List : Filtered : 1 species

Click on column buttons for interpretation of this list

F	A	S	O	Scientific Name	Common Name	Family Name	Last Date
				Brunonia australis	Blue Pincushion	Brunoniaceae	2000-2010

Exit

Help

Set Filters - Full

Undo Filters

Set Filters - Quick

Show Current Filters

Print or Export List in Alphabetic Order

Print or Export List in Systematic Order

Plot Distribution Map

Only one species fulfills all the filter categories

Click here to display a summary page for the species

**General Appearance:** A perennial herb, to 50 cm tall, with long, narrow leaves at the base of slender stems bearing a hemispherical cluster, to 30 mm wide, of small, blue flowers.

**Leaves:** Spathulate, to 15 x 2 cm, hairy, particularly along margins.

**Flowers:** Pale blue, tubular, to 5 mm wide. Apex of tube divided into 5, elliptic lobes. (Jan Feb Sep Oct Nov Dec)

**Fruit:** Ovoid, one-seeded nuts, to 3 mm wide, enclosed by persistent calyx.

**Environment:** A range of woodlands and grasslands.

**Other States:** NSW NT QLD SA WA TAS ACT

**Commonly Associated Trees:** *Eucalyptus macrorhyncha*, *Eucalyptus obliqua*, *Eucalyptus polyanthemos*, *Eucalyptus melliodora*, *Eucalyptus radiata* s.l., *Eucalyptus goniacalyx* s.l.

**Annual Rainfall:** 552 to 1038 mm

**Warmest Temperatures:** 25 to 29 °C

**Coolest Temperatures:** 2 to 4 °C

**Altitude:** 200 to 400 m ASL

Print Picture Text and Map

Display Larger

Create and print the selected image and text in an A4 format

Highlight any technical word then right-click mouse to find its meaning

Photographer: Paul Gullan/Viridans Images

Image 1 of 2



Exit

© Viridans Biological Databases